

# Themes in Popular Songs

Spotlight on Teens

A graphic of a musical staff with five horizontal lines. On the left, there are three yellow musical notes: a quarter note on the first line, a quarter note on the second line, and a quarter note on the third line. On the right, there are two yellow musical notes: a quarter note on the second line and a quarter note on the third line. The title "Issues in Music" is centered on the staff in a bold, yellow, sans-serif font.

# Issues in Music

- **A.** The effects of, or problem with, physical maturity.
- **B.** The effects of, or ways of dealing with, the undefined status of adolescence in modern society.
- **C.** The problems associated with, or benefits of, increased decision making power during adolescence.
- **D.** The increased pressures of adolescence.

A graphic of a musical staff with five horizontal lines. On the left, there are three yellow notes: a quarter note on the first line, a quarter note on the second line, and a quarter note on the third line. On the right, there are two yellow notes: a quarter note on the second line and a quarter note on the third line. The title "Issues in Music" is centered on the staff in a bold, yellow, sans-serif font.

# Issues in Music

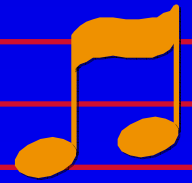
- **E.** The problems involved in establishing meaningful relationships.
- **F.** The search for self identity during adolescence.
- **G.** The forms of anticipatory socialization common in adolescence.
- **H.** The learning of correct ways to behave in social and other situations.
- **I.** The importance of establishing friendships with members of the opposite sex.



- **J.** The need to be flexible in relationships.
- **K.** The expectations and commitments involved in relationships.



# Reviewing the Songs



- Visit [www.billboard.com](http://www.billboard.com) (other sites may be used)
- Click on charts with preferred genre(Required-4).
- Each team will be responsible to cover 25 songs of their choice.
- Songs must be appropriate. NO Abusive language or content!!
- Printed lyrics must be presented when you turn in team questions.

A graphic of a musical staff with five red lines. On the left, there are three yellow notes: a quarter note on the first line, an eighth note on the second line, and a quarter note on the third line. On the right, there are two yellow notes: a quarter note on the second line and a quarter note on the third line. The title "Song Examination" is written in yellow text across the middle of the staff.

# Song Examination

- What is the name of the song?
- What is the main theme of the song?
- Are there any secondary themes?
- What are the key words or phrases in the song that give a clue to the main theme or secondary theme?
- Highlight the important key words and phrases.



# Gathering Song Details



- After you collect your song information, compare the information to issues in issues in music list A-K.
- Chart your findings.
- The letters refer to issues in the lists you compiled and the numbers refer to the songs your reviewed.
- Each song can have as many letter categories as applicable.
- Count the number of times an issue is addressed (A-K). Which themes appear to be most common in popular songs?



# Themes in Music Rubric



- 25 Points – Printed Lyrics and Highlighted
- 25 Points – Song Examination
- 25 Points – Song Examination Chart
- 25 Points – Neatness, Research Effort, and Teamwork
- Total 100
- Date Due \_\_\_\_\_